

ACHTECK

www.achtecktool.com

难加工材料切削专家
THE EXPERT OF DIFFICULT MACHINING

工具系统



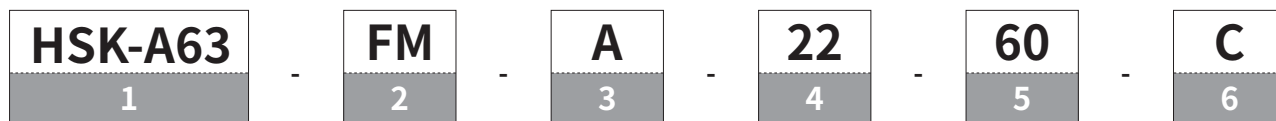
产品一览

系列	强力刀柄	筒夹刀柄	面铣刀柄	侧固刀柄	液压刀柄	热胀刀柄
系列						
主轴接口标准	JIS B6339	JIS B6339	JIS B6339	JIS B6339	JIS B6339	JIS B6339
精加工	●	●	●		●	●
高速切削		●			●	●
粗加工	●	●	●	●		
夹持范围	6-32	4-25	22-60	20-40	6-32	3-32
使用注意事项	筒夹检查、清洁	筒夹检查、清洁	螺钉锁紧	螺钉锁紧	筒夹检查、清洁	夹持端腔体检查、清洁
主轴接口	BT40、BT50	BT40、BT50	BT40、BT50	BT40、BT50	BT40、BT50	BT40、BT50
夹持接口	PC 20/25/32	ER 16/20/25/32/40	FM 22/27/32/40/60	SLB 20/25/32/40	HCA 6/8/10/12/14/16/20/25/32	SF 3/4/5/6/8/10/12/14/16/18/20/25/32

产品一览

强力刀柄	筒夹刀柄	面铣刀柄	侧固刀柄	液压刀柄	热胀刀柄
					
DIN69893	DIN69893	DIN69893	DIN69893	DIN69893	DIN69893
●	●		●	●	●
	●			●	●
●	●	●	●		
6-42	4-25	22-60	16-40	6-32	3-32
筒夹检查、 清洁	筒夹检查、 清洁	螺钉锁紧	螺钉锁紧	夹持端腔体 检查、清洁	夹持端腔体 检查、清洁
HSK-A63 HSK-A100	HSK-A63 HSK-A100	HSK-A63 HSK-A100	HSK-A63 HSK-A100	HSK-A63 HSK-A100	HSK-A63 HSK-A100
PC 20/25/32/42	ER 16/20/25/32/40	FM_ 22/27/32/40/60	SLB 16/20/25/32/40	HCA 6/8/10/12/14/16/ /20/25/32	SF 3/4/5/6/8/10/ 12/14/16/18/ 20/25/32

刀柄命名规则



1- 主轴形式
HSK-A63 HSK-A100 BT40 BT50

2- 夹持形式	
代码	名称
HC	液压刀柄 (Hydraulic Chuck)
SF	热胀刀柄 (Shrink Fit Chuck)
ER	ER 弹簧夹头刀柄 (ER Collet Chuck)
SL	侧固刀柄 (Side Lock Chuck)
PC	强力刀柄 (Power Mill Chuck)
FM	面铣刀柄 (Face Milling Cutter Arbor)

3- 区分代码	
热胀、液压及强力刀柄	无 ----- 普通型 S----- 细小型 P----- 强力型
侧固刀柄	B----- 侧固型 E ----- 斜 2°侧固
面铣刀柄	A----- 普通螺钉锁紧型 B----- 螺钉加垫片锁紧型 C----- 周边螺钉锁紧型 D----- 减振型
弹簧夹头刀柄	无 ----- 普通型 V----- 攻丝专用型 H----- 高转速型

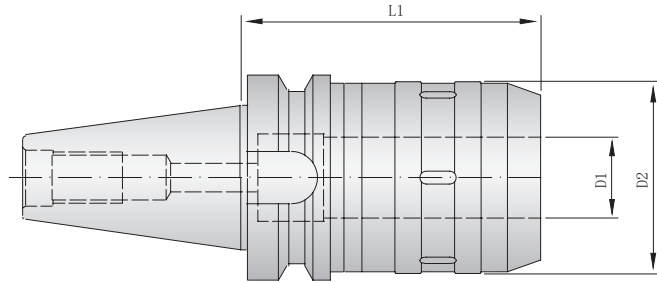
4- 夹持直径 D1
D1=22mm

5- 刀柄长度 L1
L1=60mm

6- 其他	
C	端面出水孔冷却

强力刀柄

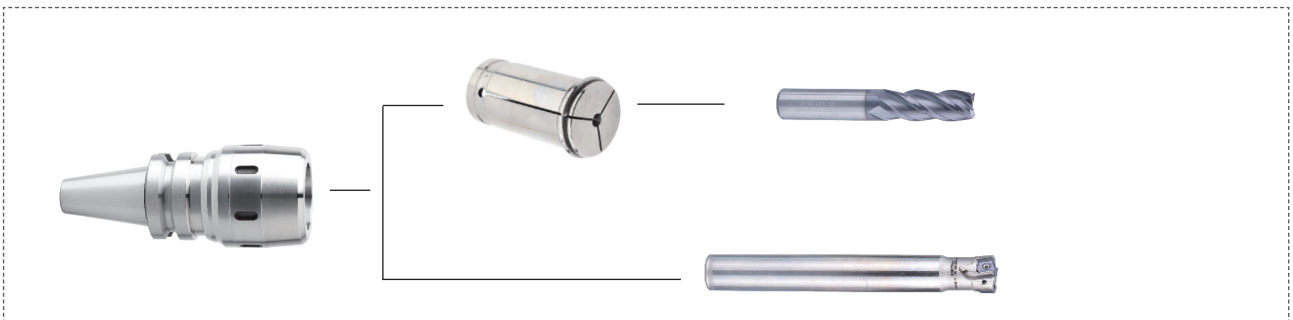
JIS B6339



型号	主轴接口	尺寸 (mm)			
		D1	D2	L1	扳手 (选配)
BT40-PC20-80	BT40	20	53	80	W-C20
BT40-PC25-90	BT40	25	58	90	W-C25
BT40-PC32-105	BT40	32	68	105	W-C32
BT50-PC25-90	BT50	25	58	90	W-C25
BT50-PC32-105	BT50	32	68	105	W-C32

注：扳手、变径套需单独订货。

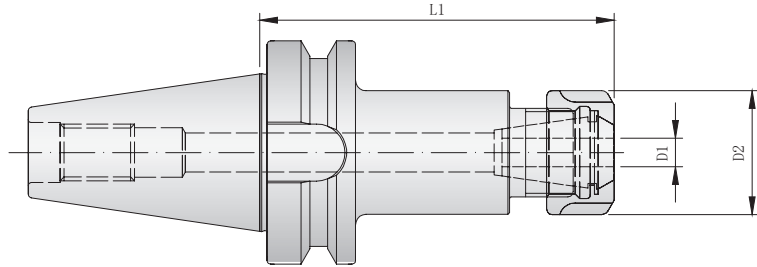
刀具装配图



W
系列
刀柄

ER 筒夹刀柄

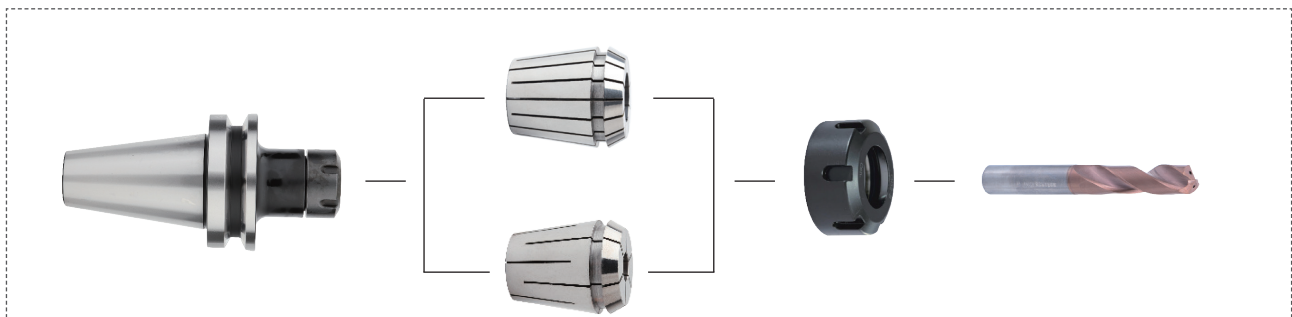
JIS B6339



型号	主轴接口	尺寸 (mm)			螺母	筒夹 (选配)
		D1	D2	L1		
BT40-ER16-70	BT40	4-10	28	70	ER16-A	ER16
BT40-ER16-100	BT40	4-10	28	100	ER16-A	ER16
BT40-ER16-150	BT40	4-10	28	150	ER16-A	ER16
BT40-ER20-70	BT40	4-12	34	70	ER20-A	ER20
BT40-ER20-100	BT40	4-12	34	100	ER20-A	ER20
BT40-ER20-150	BT40	4-12	34	150	ER20-A	ER20
BT40-ER25-70	BT40	4-16	42	70	ER25-UM	ER25
BT40-ER25-100	BT40	4-16	42	100	ER25-UM	ER25
BT40-ER25-150	BT40	4-16	42	150	ER25-UM	ER25
BT40-ER32-70	BT40	4-20	50	70	ER32-UM	ER32
BT40-ER32-100	BT40	4-20	50	100	ER32-UM	ER32
BT40-ER32-150	BT40	4-20	50	150	ER32-UM	ER32

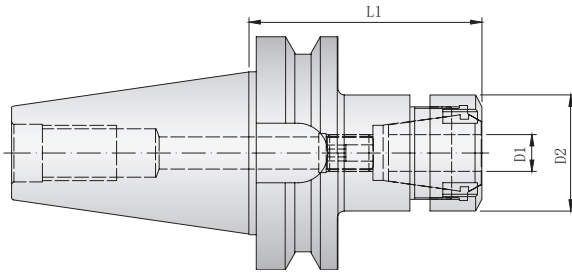
注：扳手、轴线限位螺钉、筒夹需单独订货。

刀具装配图



ER 筒夹刀柄

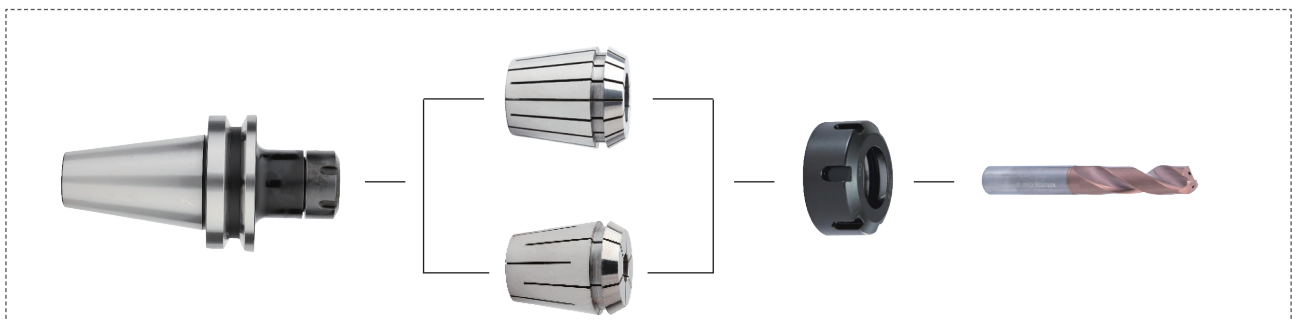
JIS B6339



型号	主轴接口	尺寸 (mm)			螺母	筒夹 (选配)
		D1	D2	L1		
BT50-ER16-70	BT50	4-10	28	70	ER16-A	ER16
BT50-ER16-100	BT50	4-10	28	100	ER16-A	ER16
BT50-ER16-150	BT50	4-10	28	150	ER16-A	ER16
BT50-ER20-70	BT50	4-12	34	70	ER20-A	ER20
BT50-ER20-100	BT50	4-12	34	100	ER20-A	ER20
BT50-ER20-150	BT50	4-12	34	150	ER20-A	ER20
BT50-ER25-100	BT50	4-16	42	100	ER25-UM	ER25
BT50-ER25-150	BT50	4-16	42	150	ER25-UM	ER25
BT50-ER32-100	BT50	4-20	50	100	ER32-UM	ER32
BT50-ER32-150	BT50	4-20	50	150	ER32-UM	ER32
BT50-ER40-100	BT50	4-26	63	100	ER40-UM	ER40
BT50-ER40-150	BT50	4-26	63	150	ER40-UM	ER40
BT50-ER40-200	BT50	4-26	63	200	ER40-UM	ER40

注：扳手、轴线限位螺钉、筒夹需单独订货。

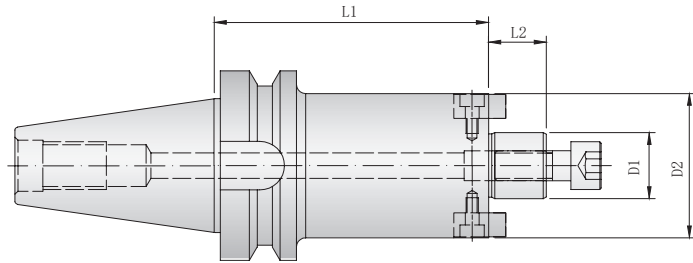
刀具装配图



ER系列刀柄

面铣刀柄

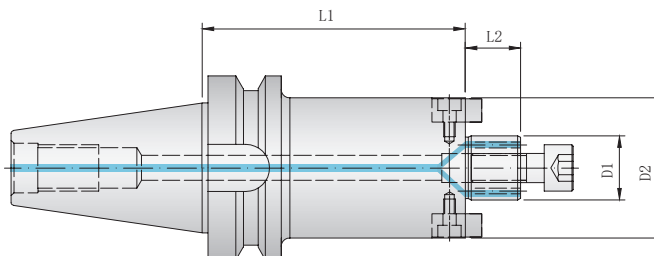
JIS B6339



型号	主轴接口	尺寸 (mm)				端面紧固螺钉
		D1	D2	L1	L2	
BT40-FMA22-45	BT40	22	48	45	16.5	M10
BT40-FMA22-60	BT40	22	48	60	16.5	
BT40-FMA22-100	BT40	22	48	100	16.5	
BT40-FMA22-150	BT40	22	48	150	16.5	
BT40-FMA27-45	BT40	27	60	45	18.5	M12
BT40-FMA27-60	BT40	27	60	60	18.5	
BT40-FMA27-100	BT40	27	60	100	18.5	
BT40-FMA27-150	BT40	27	60	150	18.5	
BT40-FMA27-200	BT40	27	60	200	18.5	
BT40-FMB32-60	BT40	32	62	60	22	M16
BT40-FMB32-100	BT40	32	62	100	22	
BT40-FMB32-150	BT40	32	62	150	22	
BT40-FMB32-200	BT40	32	62	200	22	
BT40-FMB40-60	BT40	40	80	60	23	M20
BT40-FMB40-100	BT40	40	80	100	23	
BT40-FMB40-150	BT40	40	80	150	23	
BT40-FMB40-200	BT40	40	80	200	23	

芯轴端面出水面铣刀柄

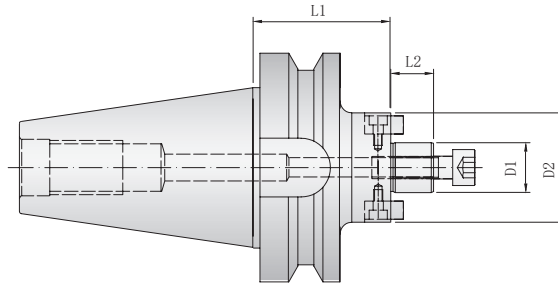
JIS B6339



型号	主轴接口	尺寸 (mm)				内冷	端面紧固螺钉
		D1	D2	L1	L2		
BT40-FMA22-60-C	BT40	22	48	60	16.5		M10
BT40-FMA22-100-C	BT40	22	48	100	16.5		
BT40-FMA27-60-C	BT40	27	60	60	18.5		M12
BT40-FMA27-100-C	BT40	27	60	100	18.5		
BT40-FMB32-60-C	BT40	32	62	60	22		M16
BT40-FMB32-100-C	BT40	32	62	100	22		
BT40-FMB40-60-C	BT40	40	80	60	23		M20

面铣刀柄

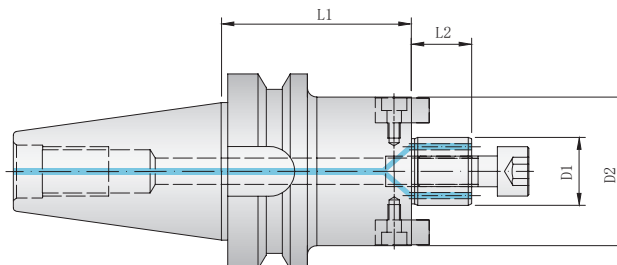
JIS B6339



型号	主轴接口	尺寸 (mm)				端面紧固螺钉
		D1	D2	L1	L2	
BT50-FMA22-60	BT50	22	48	60	16.5	M10
BT50-FMA22-100	BT50	22	48	100	16.5	
BT50-FMA22-150	BT50	22	48	150	16.5	
BT50-FMA22-200	BT50	22	48	200	16.5	
BT50-FMA27-60	BT50	27	60	60	18.5	M12
BT50-FMA27-100	BT50	27	60	100	18.5	
BT50-FMA27-150	BT50	27	60	150	18.5	
BT50-FMA27-200	BT50	27	60	200	18.5	
BT50-FMB32-60	BT50	32	73	60	22	M16
BT50-FMB32-100	BT50	32	73	100	22	
BT50-FMB32-150	BT50	32	73	150	22	
BT50-FMB32-200	BT50	32	73	200	22	
BT50-FMB40-60	BT50	40	80	60	23	M20
BT50-FMB40-100	BT50	40	80	100	23	
BT50-FMB40-150	BT50	40	80	150	23	
BT50-FMB40-200	BT50	40	80	200	23	

芯轴端面出水面铣刀柄

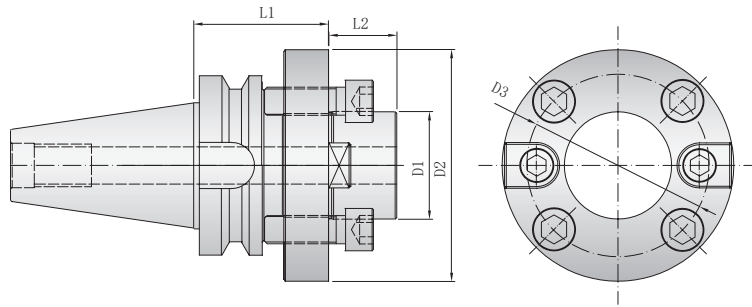
JIS B6339



型号	主轴接口	尺寸 (mm)				内冷	端面紧固螺钉
		D1	D2	L1	L2		
BT50-FMA22-60-C	BT50	22	48	60	16.5		M10
BT50-FMA22-100-C	BT50	22	48	100	16.5		
BT50-FMA27-60-C	BT50	27	60	60	18.5		M12
BT50-FMA27-100-C	BT50	27	60	100	18.5		
BT50-FMB32-60-C	BT50	32	73	60	22		M16
BT50-FMB32-100-C	BT50	32	73	100	22		
BT50-FMB40-60-C	BT50	40	80	60	23		M20
BT50-FMB40-100-C	BT50	40	80	100	23		

大直径面铣刀柄

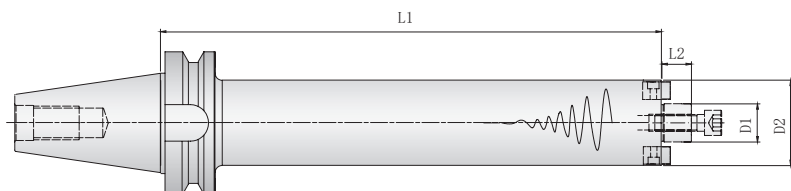
JIS B6339



型号	主轴接口	尺寸 (mm)					端面紧固螺钉
		D1	D2	D3	L1	L2	
BT50-FMC40-60	BT50	40	98	66.7	60	23	4*M12
BT50-FMC40-100	BT50	40	98	66.7	100	23	
BT50-FMC40-150	BT50	40	98	66.7	150	23	
BT50-FMC60-75	BT50	60	140	101.6	75	25	4*M16

减振面铣刀柄

JIS B6339



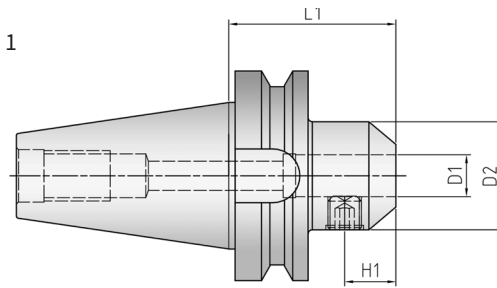
型号	主轴接口	尺寸 (mm)				重量 (Kg)
		D1	D2	L1	L2	
BT50-FMD22-300-D48	BT50	22	48	300	18	6.6
BT50-FMD22-350-D48	BT50	22	48	350	18	7.25
BT50-FMD22-400-D48	BT50	22	48	400	18	7.95
BT50-FMD22-300-D58	BT50	22	58	300	18	7.5
BT50-FMD22-400-D58	BT50	22	58	400	18	9.3
BT50-FMD22-500-D58	BT50	22	58	500	18	11
BT50-FMD27-300-D58	BT50	27	58	300	20	7.6
BT50-FMD27-400-D58	BT50	27	58	400	20	9.3
BT50-FMD27-500-D58	BT50	27	58	500	20	11
BT50-FMD27-300-D78	BT50	27	78	300	20	8.74
BT50-FMD27-400-D78	BT50	27	78	400	20	11
BT50-FMD27-500-D78	BT50	27	78	500	20	13.4
BT50-FMD32-300-D78	BT50	32	78	300	21	8.9
BT50-FMD32-400-D78	BT50	32	78	400	21	11.2
BT50-FMD32-500-D78	BT50	32	78	500	21	13.5

注：按订单生产

侧固刀柄

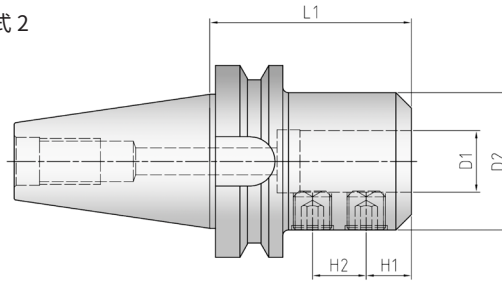


样式 1



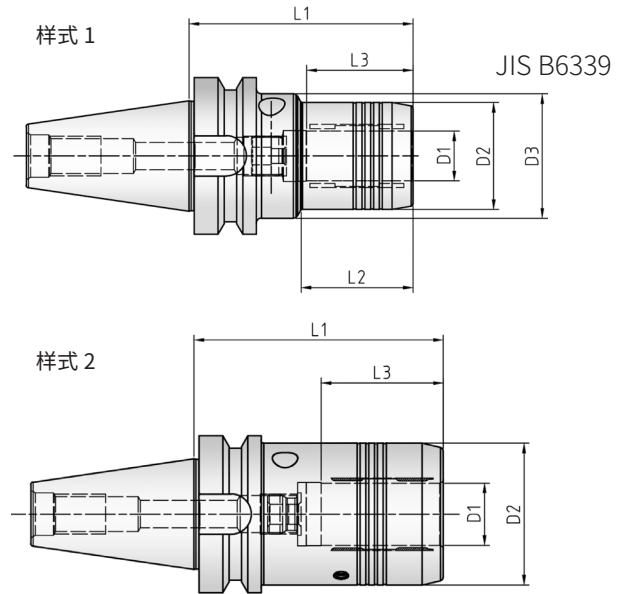
JIS B6339

样式 2



型号	主轴接口	尺寸 (mm)					样式
		D1	D2	H1	H2	L1	
BT40-SLB20-63	BT40	20	52	25	-	63	1
BT40-SLB25-100	BT40	25	65	24	25	100	2
BT40-SLB32-100	BT40	32	72	24	28	100	2
BT50-SLB20-80	BT50	20	52	25	-	80	1
BT50-SLB25-100	BT50	25	65	24	25	100	2
BT50-SLB32-105	BT50	32	72	24	28	105	2
BT50-SLB40-115	BT50	40	80	30	32	115	2

液压刀柄

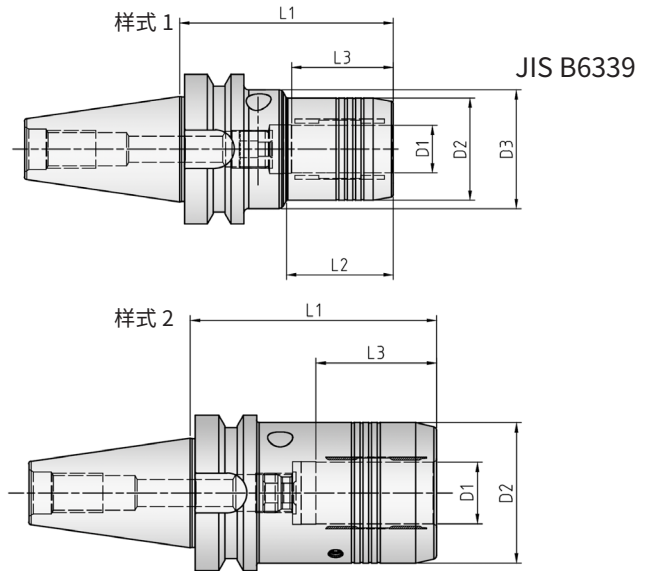


型号	主轴接口	尺寸 (mm)						适配筒夹	样式
		D1	D2	D3	L1	台阶长度 L2	最小夹持深度 L3		
BT40-HCA06-90	BT40	6	28	50	90	44	27.5	-	1
BT40-HCA08-90	BT40	8	30	50	90	39	27.5	-	1
BT40-HCA10-90	BT40	10	32	50	90	44	32.5	-	1
BT40-HCA12-90	BT40	12	34	50	90	44	37.5	HC12-..	1
BT40-HCA14-90	BT40	14	36	50	90	44	37.5	-	1
BT40-HCA16-90	BT40	16	38	50	90	48	42.5	-	1
BT40-HCA18-90	BT40	18	41	50	90	48	42.5	-	1
BT40-HCA20-90	BT40	20	43	50	90	48	42.5	HC20-..	1
BT40-HCA25-100	BT40	25	57	/	100	/	51	-	2
BT40-HCA32-105	BT40	32	63	/	105	/	55	HC32-..	2

不含筒夹
 预设动平衡 G2.5 20000rpm
 3 倍径处径向跳动 ≤ 0.003mm

BT
系列
刀柄

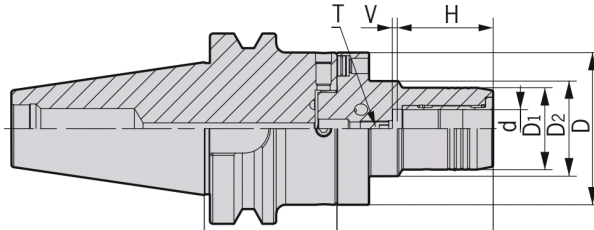
液压刀柄



型号	主轴接口	尺寸 (mm)						适配筒夹	样式
		D1	D2	D3	L1	台阶长度 L2	最小夹持深度 L3		
BT50-HCA06-90	BT50	6	28	50	90	32	27.5	-	1
BT50-HCA08-90	BT50	8	30	50	90	32	27.5	-	1
BT50-HCA10-90	BT50	10	32	50	90	32	32.5	-	1
BT50-HCA12-90	BT50	12	34	50	90	32	37.5	HC12-..	1
BT50-HCA14-90	BT50	14	36	50	90	32	37.5	-	1
BT50-HCA16-90	BT50	16	38	50	90	32	42.5	-	1
BT50-HCA18-90	BT50	18	41	50	90	32	42.5	-	1
BT50-HCA20-90	BT50	20	43	50	90	32	42.5	HC20-..	1
BT50-HCA25-105	BT50	25	57	/	105	/	51	-	2
BT50-HCA32-115	BT50	32	63	/	115	/	55	HC32-..	2

注：不含筒夹
 预设动平衡 G2.5 20000rpm
 3 倍径处径向跳动 ≤ 0.003mm

可调液压刀柄

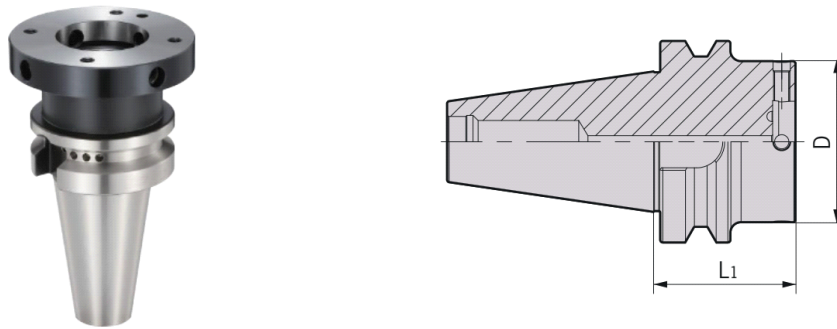


型号	尺寸 (mm)									适配筒夹
	D	D1	D2	d	L	L1	L2	H	V	
BT40-HCX06-130	80	28	50	6	130	65	65	27.5	10	-
BT40-HCX08-130	80	30	50	8	130	65	65	27.5	10	-
BT40-HCX10-135	80	32	50	10	135	65	70	32.5	10	-
BT40-HCX12-140	80	34	50	12	140	65	75	37.5	10	HC12-..
BT40-HCX16-147.5	80	38	50	16	147.5	65	82.5	42.5	10	-
BT40-HCX20-147.5	80	43	50	20	147.5	65	82.5	42.5	10	HC20-..
BT40-HCX25-170	100	57	63	25	170	70	100	51	10	-
BT40-HCX32-173	100	63	70	32	173	70	103	55	10	HC32-..
BT50-HCX06-135	80	28	50	6	135	70	65	27.5	10	-
BT50-HCX08-135	80	30	50	8	135	70	65	27.5	10	-
BT50-HCX10-140	80	32	50	10	140	70	70	32.5	10	-
BT50-HCX12-145	80	34	50	12	145	70	75	37.5	10	HC12-..
BT50-HCX16-152.5	80	38	50	16	152.5	70	82.5	42.5	10	-
BT50-HCX20-152.5	80	43	50	20	152.5	70	82.5	42.5	10	HC20-..
BT50-HCX25-170	100	57	63	25	170	70	100	51	10	-
BT50-HCX32-173	100	63	70	32	173	70	103	55	10	HC32-..
SK40-HCX06-120	80	28	50	6	120	55	65	27.5	10	-
SK40-HCX08-120	80	30	50	8	120	55	65	27.5	10	-
SK40-HCX10-125	80	32	50	10	125	55	70	32.5	10	-
SK40-HCX12-130	80	34	50	12	130	55	75	37.5	10	HC12-..
SK40-HCX16-137.5	80	38	50	16	137.5	55	82.5	42.5	10	-
SK40-HCX20-137.5	80	43	50	20	137.5	55	82.5	42.5	10	HC20-..
SK40-HCX25-160	100	57	63	25	160	60	100	51	10	-
SK40-HCX32-163	100	63	70	32	163	60	103	55	10	HC32-..
SK50-HCX06-115	80	28	50	6	115	50	65	27.5	10	-
SK50-HCX08-115	80	30	50	8	115	50	65	27.5	10	-
SK50-HCX10-120	80	32	50	10	120	50	70	32.5	10	-
SK50-HCX12-125	80	34	50	12	125	50	75	37.5	10	HC12-..
SK50-HCX16-132.5	80	38	50	16	132.5	50	82.5	42.5	10	-
SK50-HCX20-132.5	80	43	50	20	132.5	50	82.5	42.5	10	HC20-..
SK50-HCX25-160	100	57	63	25	160	60	100	51	10	-

注：调整刀具轴向与径向跳动无限趋近于 0
预设定平衡 G6.3

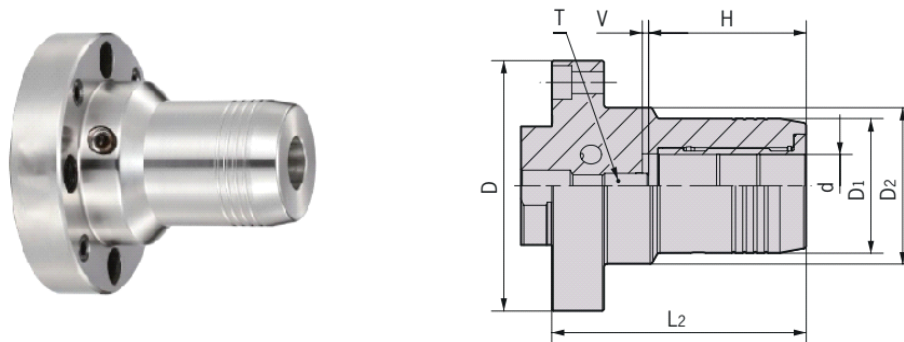
刀柄配件

可调刀柄 - 主轴端



型号	尺寸 (mm)	
	D	L1
BT40-MOD80-65	80	65
BT40-MOD100-70	100	70
BT50-MOD80-70	80	70
BT50-MOD100-70	100	70
SK40-MOD80-55	80	55
SK40-MOD100-60	100	60

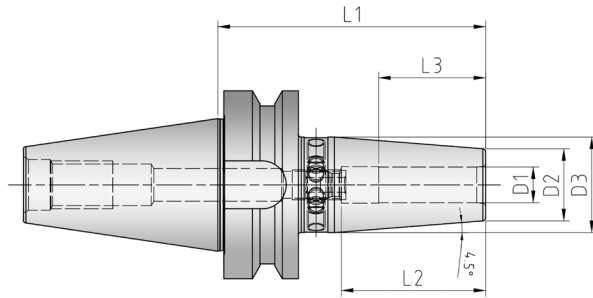
可调液压刀柄 - 夹持端



型号	尺寸 (mm)							适配筒夹
	D	D1	D2	d	L2	H	V	
M0D80-HCX06-65	80	28	50	6	65	27.5	10	-
M0D80-HCX08-65	80	30	50	8	65	27.5	10	-
M0D80-HCX10-70	80	32	50	10	70	32.5	10	-
M0D80-HCX12-75	80	34	50	12	75	37.5	10	HC12-..
M0D80-HCX16-82.5	80	38	50	16	82.5	42.5	10	-
M0D80-HCX20-82.5	80	43	50	20	82.5	42.5	10	HC20-..
MOD100-HCX25-100	100	57	63	25	100	51	10	-
MOD100-HCX32-103	100	63	70	32	103	55	10	HC32-..

标准型热胀刀柄

JIS B6339



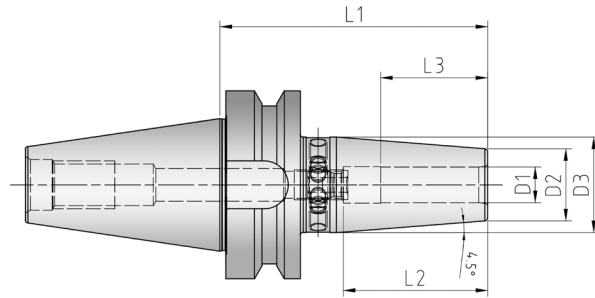
型号	主轴接口	尺寸 (mm)					
		D1	D2	D3	L1	L2 最大装夹深度	L3 最小装夹深度
BT40-SF03-90	BT40	3	10	16	90	-	9
BT40-SF04-90	BT40	4	10	16	90	-	12
BT40-SF04-150	BT40	4	10	16	150	-	12
BT40-SF05-90	BT40	5	10	16	90	-	15
BT40-SF05-150	BT40	5	10	16	150	-	15
BT40-SF06-90	BT40	6	21	27	90	36	26
BT40-SF06-150	BT40	6	21	27	150	36	26
BT40-SF06-130	BT40	6	21	27	130	36	26
BT40-SF06-160	BT40	6	21	27	160	36	26
BT40-SF08-90	BT40	8	21	27	90	36	26
BT40-SF08-130	BT40	8	21	27	130	36	26
BT40-SF08-160	BT40	8	21	27	160	36	26
BT40-SF10-90	BT40	10	24	32	90	42	32
BT40-SF10-130	BT40	10	24	32	130	42	32
BT40-SF10-160	BT40	10	24	32	160	42	32
BT40-SF12-90	BT40	12	24	32	90	47	37
BT40-SF12-130	BT40	12	24	32	130	47	37
BT40-SF12-160	BT40	12	24	32	160	47	37
BT40-SF14-90	BT40	14	27	34	90	47	37
BT40-SF14-130	BT40	14	27	34	130	47	37
BT40-SF14-160	BT40	14	27	34	160	47	37
BT40-SF16-90	BT40	16	27	34	90	50	40
BT40-SF16-130	BT40	16	27	34	130	50	40
BT40-SF16-160	BT40	16	27	34	160	50	40
BT40-SF18-90	BT40	18	33	42	90	50	40
BT40-SF18-130	BT40	18	33	42	130	50	40
BT40-SF18-160	BT40	18	33	42	160	50	40
BT40-SF20-90	BT40	20	33	42	90	52	42
BT40-SF20-130	BT40	20	33	42	130	52	42
BT40-SF20-160	BT40	20	33	42	160	52	42
BT40-SF25-100	BT40	25	44	53	100	58	48
BT40-SF25-130	BT40	25	44	53	130	58	48
BT40-SF25-160	BT40	25	44	53	160	58	48
BT40-SF32-100	BT40	32	44	53	100	58	48
BT40-SF32-130	BT40	32	44	53	130	58	48
BT40-SF32-160	BT40	32	44	53	160	58	48

刀柄标配轴向调整螺钉，含平衡螺钉孔
 预设动平衡 G2.5 20000rpm
 3 倍径处径向跳动 ≤ 0.003mm

BT
系列
刀柄

标准型热胀刀柄

JIS B6339

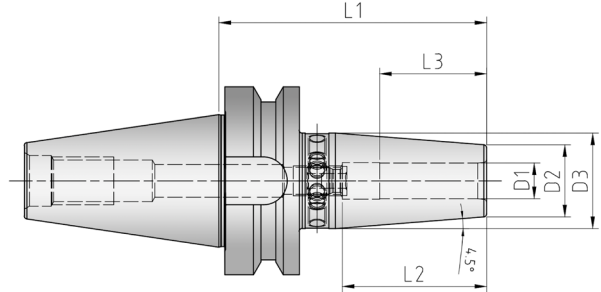


型号	主轴接口	尺寸 (mm)					
		D1	D2	D3	L1	L2 最大装夹深度	L3 最小装夹深度
JT40-SF03-90	JT40	3	10	16	90	-	9
JT40-SF04-150	JT40	4	10	16	150	-	12
JT40-SF05-150	JT40	5	10	16	150	-	15
JT40-SF06-150	JT40	6	21	27	150	36	26
JT40-SF06-130	JT40	6	21	27	130	36	26
JT40-SF06-160	JT40	6	21	27	160	36	26
JT40-SF08-90	JT40	8	21	27	90	36	26
JT40-SF08-130	JT40	8	21	27	130	36	26
JT40-SF08-160	JT40	8	21	27	160	36	26
JT40-SF10-90	JT40	10	24	32	90	42	32
JT40-SF10-130	JT40	10	24	32	130	42	32
JT40-SF10-160	JT40	10	24	32	160	42	32
JT40-SF12-90	JT40	12	24	32	90	47	37
JT40-SF12-130	JT40	12	24	32	130	47	37
JT40-SF12-160	JT40	12	24	32	160	47	37
JT40-SF14-90	JT40	14	27	34	90	47	37
JT40-SF14-130	JT40	14	27	34	130	47	37
JT40-SF14-160	JT40	14	27	34	160	47	37
JT40-SF16-90	JT40	16	27	34	90	50	40
JT40-SF16-130	JT40	16	27	34	130	50	40
JT40-SF16-160	JT40	16	27	34	160	50	40
JT40-SF18-90	JT40	18	33	42	90	50	40
JT40-SF18-130	JT40	18	33	42	130	50	40
JT40-SF18-160	JT40	18	33	42	160	50	40
JT40-SF20-90	JT40	20	33	42	90	52	42
JT40-SF20-130	JT40	20	33	42	130	52	42
JT40-SF20-160	JT40	20	33	42	160	52	42
JT40-SF25-100	JT40	25	44	53	100	58	48
JT40-SF25-130	JT40	25	44	53	130	58	48
JT40-SF25-160	JT40	25	44	53	160	58	48
JT40-SF32-100	JT40	32	44	53	100	58	48
JT40-SF32-130	JT40	32	44	53	130	58	48
JT40-SF32-160	JT40	32	44	53	160	58	48

刀柄标配轴向调整螺钉，含平衡螺钉孔
 预设动平衡 G2.5 20000rpm
 3 倍径处径向跳动 ≤ 0.003mm

标准型热胀刀柄

JIS B6339



型号	主轴接口	尺寸 (mm)					
		D1	D2	D3	L1	L2 最大装夹深度	L3 最小装夹深度
BT50-SF06-100	BT50	6	21	27	100	36	26
BT50-SF06-130	BT50	6	21	27	130	36	26
BT50-SF06-160	BT50	6	21	27	160	36	26
BT50-SF08-100	BT50	8	21	27	100	36	26
BT50-SF08-130	BT50	8	21	27	130	36	26
BT50-SF08-160	BT50	8	21	32	160	36	26
BT50-SF10-100	BT50	10	24	32	100	42	32
BT50-SF10-130	BT50	10	24	32	130	42	32
BT50-SF10-160	BT50	10	24	32	160	42	32
BT50-SF12-100	BT50	12	24	32	100	47	37
BT50-SF12-130	BT50	12	24	32	130	47	37
BT50-SF12-160	BT50	12	24	32	160	47	37
BT50-SF14-100	BT50	14	27	34	100	47	37
BT50-SF14-130	BT50	14	27	34	130	47	37
BT50-SF14-160	BT50	14	27	34	160	47	37
BT50-SF16-100	BT50	16	27	34	100	50	40
BT50-SF16-130	BT50	16	27	34	130	50	40
BT50-SF16-160	BT50	16	27	34	160	50	40
BT50-SF18-100	BT50	18	33	42	100	50	40
BT50-SF18-130	BT50	18	33	42	130	50	40
BT50-SF18-160	BT50	18	33	42	160	50	40
BT50-SF20-100	BT50	20	33	42	100	52	42
BT50-SF20-130	BT50	20	33	42	130	52	42
BT50-SF20-160	BT50	20	33	42	160	52	42
BT50-SF25-100	BT50	25	44	53	100	58	48
BT50-SF25-130	BT50	25	44	53	130	58	48
BT50-SF25-160	BT50	25	44	53	160	58	48
BT50-SF32-100	BT50	32	44	53	100	58	48
BT50-SF32-130	BT50	32	44	53	130	58	48
BT50-SF32-160	BT50	32	44	53	160	58	48

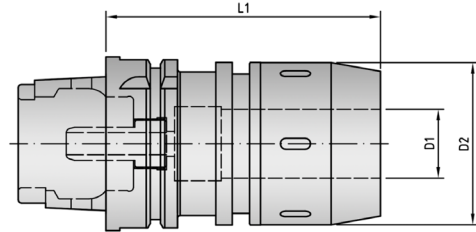
刀柄标配轴向调整螺钉，含平衡螺钉孔
 预设动平衡 G2.5 20000rpm
 3 倍径处径向跳动 ≤ 0.003mm

刀柄配件

高速强力刀柄



DIN69893



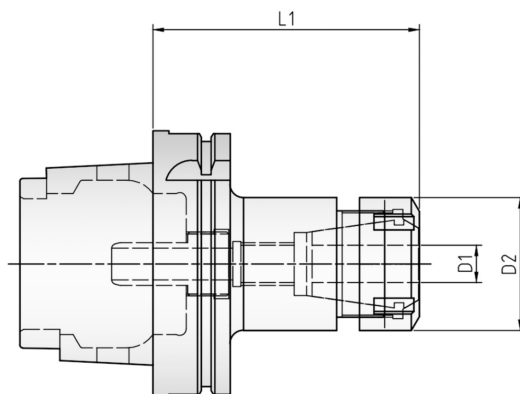
型号	主轴接口	尺寸 (mm)			扳手
		D1	D2	L1	
HSK-A63-PC20-110	HSK-A63	20	52	110	W-C20
HSK-A63-PC25-110	HSK-A63	25	61	110	W-C25
HSK-A63-PC32-110	HSK-A63	32	71	110	W-C32
HSK-A100-PC20-105	HSK-A100	20	52	105	W-C20
HSK-A100-PC25-115	HSK-A100	25	61	115	W-C25
HSK-A100-PC32-135	HSK-A100	32	71	135	W-C32
HSK-A100-PC42-115	HSK-A100	42	86	115	W-C42

标配扳手；不含筒夹、内冷管
 动平衡设定：G6.3;15000rpm
 3D 处径向跳动 ≤ 0.01mm

ER 筒夹刀柄



DIN69893



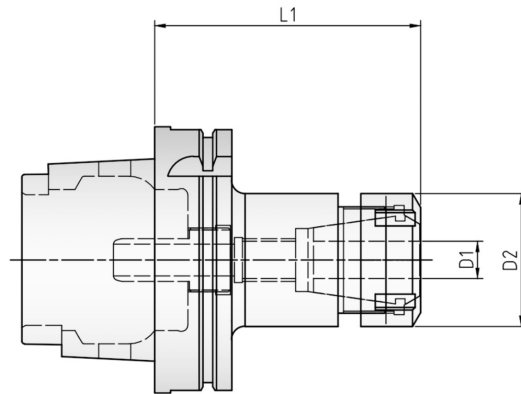
型号	主轴接口	尺寸 (mm)			筒夹螺母	筒夹 (选配)
		D1	D2	L1		
HSK-A63-ER16-75	HSK-A63	4-10	28	75	ER16-A	ER16
HSK-A63-ER16-100	HSK-A63	4-10	28	100	ER16-A	ER16
HSK-A63-ER16-160	HSK-A63	4-10	28	160	ER16-A	ER16
HSK-A63-ER20-80	HSK-A63	4-12	34	80	ER20-A	ER20
HSK-A63-ER20-100	HSK-A63	4-12	34	100	ER20-A	ER20
HSK-A63-ER20-160	HSK-A63	4-12	34	160	ER20-A	ER20
HSK-A63-ER25-80	HSK-A63	4-16	42	80	ER25-UM	ER25
HSK-A63-ER25-100	HSK-A63	4-16	42	100	ER25-UM	ER25
HSK-A63-ER25-150	HSK-A63	4-16	42	150	ER25-UM	ER25
HSK-A63-ER32-100	HSK-A63	4-20	50	100	ER32-UM	ER32
HSK-A63-ER32-160	HSK-A63	4-20	50	160	ER32-UM	ER32

注：扳手、轴线限位螺钉、筒夹需单独订货
 动平衡设定：G6.3;15000rpm

ER 筒夹刀柄



DIN69893



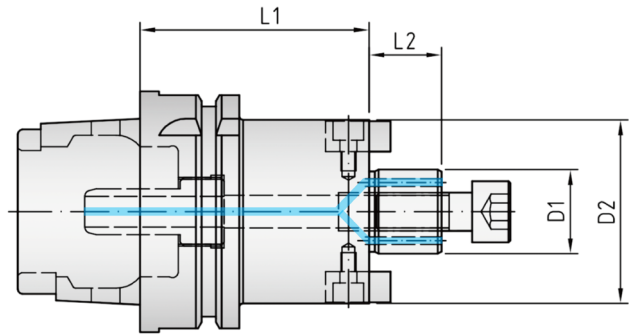
型号	主轴接口	尺寸 (mm)			筒夹螺母	筒夹 (选配)
		D1	D2	L1		
HSK-A100-ER16-100	HSK-A100	4-10	28	100	ER16-A	ER16
HSK-A100-ER16-160	HSK-A100	4-10	28	160	ER16-A	ER16
HSK-A100-ER20-100	HSK-A100	4-12	34	100	ER20-A	ER20
HSK-A100-ER20-160	HSK-A100	4-12	34	160	ER20-A	ER20
HSK-A100-ER25-100	HSK-A100	4-16	42	100	ER25-UM	ER25
HSK-A100-ER25-160	HSK-A100	4-16	42	160	ER25-UM	ER25
HSK-A100-ER32-100	HSK-A100	4-20	50	100	ER32-UM	ER32
HSK-A100-ER32-160	HSK-A100	4-20	50	160	ER32-UM	ER32
HSK-A100-ER40-100	HSK-A100	4-25	63	100	ER40-UM	ER40
HSK-A100-ER40-160	HSK-A100	4-25	63	160	ER40-UM	ER40

注：扳手、轴线限位螺钉、筒夹需单独订货
 动平衡设定：G6.3;15000rpm

面铣刀柄



DIN69893

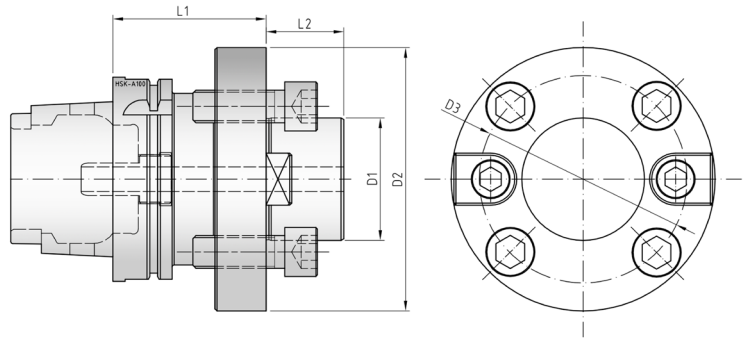


型号	主轴接口	尺寸 (mm)				内冷	端面紧固螺钉
		D1	D2	L1	L2		
HSK-A63-FMA16-100-C	HSK-A63	16	38	100	16		M8
HSK-A63-FMA22-50-C	HSK-A63	22	48	50	18		M10
HSK-A63-FMA22-100-C	HSK-A63	22	48	100	18		M10
HSK-A63-FMA27-60-C	HSK-A63	27	60	60	20		M12
HSK-A63-FMA27-100-C	HSK-A63	27	60	100	20		M12
HSK-A63-FMB32-60-C	HSK-A63	32	78	60	22		M16
HSK-A100-FMA22-50-C	HSK-A100	22	48	50	18		M10
HSK-A100-FMA22-100-C	HSK-A100	22	48	100	18		M10
HSK-A100-FMA27-50-C	HSK-A100	27	60	50	20		M12
HSK-A100-FMA27-100-C	HSK-A100	27	60	100	20		M12
HSK-A100-FMB32-50-C	HSK-A100	32	78	50	22		M16
HSK-A100-FMB32-100-C	HSK-A100	32	78	100	22		M16
HSK-A100-FMB40-60-C	HSK-A100	40	85	60	25		M20

面铣刀柄

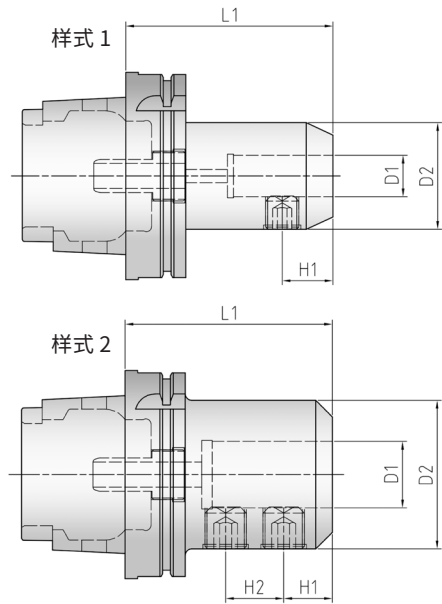


DIN69893



型号	主轴接口	尺寸 (mm)					端面紧固螺钉
		D1	D2	L2	L1	D3	
HSK-A100-FMC40-75	HSK-A100	40	89	25	75	66.7	4*M12
HSK-A100-FMC60-70	HSK-A100	60	129	32	70	101.6	4*M16

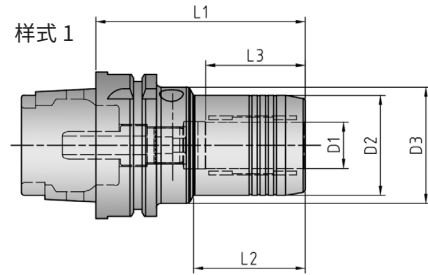
侧固刀柄



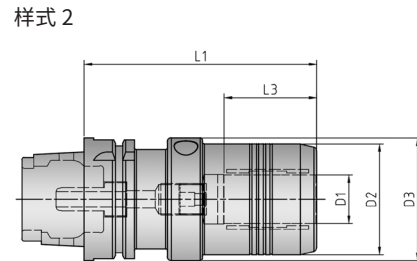
DIN69893

型号	主轴接口	尺寸 (mm)					样式
		D1	D2	H1	H2	L1	
HSK-A63-SLB16-80	HSK-A63	16	48	24	-	80	1
HSK-A63-SLB20-80	HSK-A63	20	52	25	-	80	1
HSK-A63-SLB25-110	HSK-A63	25	65	24	25	110	2
HSK-A63-SLB32-110	HSK-A63	32	72	24	28	110	2
HSK-A100-SLB16-100	HSK-A100	16	48	24	-	100	1
HSK-A100-SLB20-100	HSK-A100	20	52	25	-	100	1
HSK-A100-SLB25-100	HSK-A100	25	65	24	25	100	2
HSK-A100-SLB32-100	HSK-A100	32	72	24	28	100	2
HSK-A100-SLB40-120	HSK-A100	40	80	30	32	120	2

液压刀柄



DIN69893



型号	主轴接口	尺寸 (mm)						筒夹	样式
		D1	D2	D3	L1	台阶长度 L2	最小夹持深度 L3		
HSK-A63-HCA06-70	HSK-A63	6	28	50	70	24	27.5	-	1
HSK-A63-HCA08-70	HSK-A63	8	30	50	70	24	27.5	-	1
HSK-A63-HCA10-80	HSK-A63	10	32	50	80	35	32.5	-	1
HSK-A63-HCA12-85	HSK-A63	12	34	50	85	40	37.5	HC12-..	1
HSK-A63-HCA14-85	HSK-A63	14	36	50	85	40	37.5	-	1
HSK-A63-HCA16-90	HSK-A63	16	38	50	90	46	42.5	-	1
HSK-A63-HCA18-90	HSK-A63	18	41	50	90	47	42.5	-	1
HSK-A63-HCA20-90	HSK-A63	20	43	50	90	48	42.5	HC20-..	1
HSK-A63-HCA25-120	HSK-A63	25	57	63	120	59	51	-	1
HSK-A63-HCA32-125	HSK-A63	32	63	75	125	/	55	HC32-..	2

筒夹需单独订购
 预设动平衡 G2.5 20000rpm
 3 倍径处径向跳动 ≤ 0.003mm

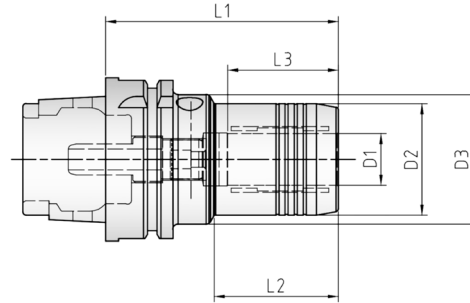
液压刀柄



DIN69893



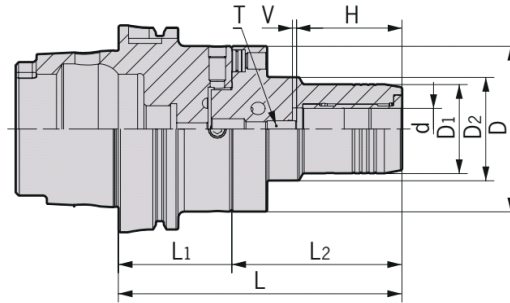
样式 1



型号	主轴接口	尺寸 (mm)						筒夹	样式
		D1	D2	D3	L1	台阶长度 L2	最小夹持深度 L3		
HSK-A100-HCA06-75	HSK-A100	6	28	50	75	26	27.5	-	1
HSK-A100-HCA08-75	HSK-A100	8	30	50	75	26	27.5	-	1
HSK-A100-HCA10-90	HSK-A100	10	32	50	90	42	32.5	-	1
HSK-A100-HCA12-95	HSK-A100	12	34	50	95	47	37.5	HC12-	1
HSK-A100-HCA14-95	HSK-A100	14	36	50	95	47	37.5	-	1
HSK-A100-HCA16-100	HSK-A100	16	38	50	100	53	42.5	-	1
HSK-A100-HCA18-100	HSK-A100	18	41	50	100	53	42.5	-	1
HSK-A100-HCA20-105	HSK-A100	20	43	50	105	59	42.5	HC20-	1
HSK-A100-HCA25-110	HSK-A100	25	57	63	110	62	51	-	1
HSK-A100-HCA32-110	HSK-A100	32	63	75	110	62	55	HC32-	1

筒夹需单独订购
 预设动平衡 G2.5 20000rpm
 3 倍径处径向跳动 ≤ 0.003mm

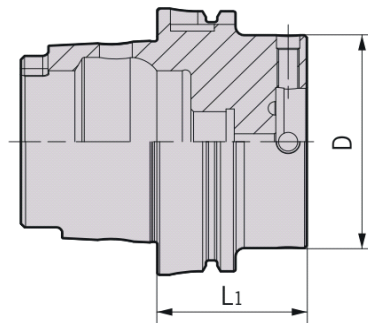
可调液压刀柄



型号	尺寸 (mm)									适配筒夹
	D	D1	D2	d	L	L1	L2	H	V	
HSK-A63-HCX06-125	80	28	50	6	125	60	65	27.5	10	-
HSK-A63-HCX08-125	80	30	50	8	125	60	65	27.5	10	-
HSK-A63-HCX10-130	80	32	50	10	130	60	70	32.5	10	-
HSK-A63-HCX12-135	80	34	50	12	135	60	75	37.5	10	HC12-..
HSK-A63-HCX16-142.5	80	38	50	16	142.5	60	82.5	42.5	10	-
HSK-A63-HCX20-142.5	80	43	50	20	142.5	60	82.5	42.5	10	HC20-..
HSK-A63-HCX25-165	100	57	63	25	165	65	100	51	10	-
HSK-A63-HCX32-168	100	63	70	32	168	65	103	55	10	HC32-..
HSK-A100-HCX06-120	80	28	50	6	120	55	65	27.5	10	-
HSK-A100-HCX08-120	80	30	50	8	120	55	65	27.5	10	-
HSK-A100-HCX10-125	80	32	50	10	125	55	70	32.5	10	-
HSK-A100-HCX12-130	80	34	50	12	130	55	75	37.5	10	HC12-..
HSK-A100-HCX16-137.5	80	38	50	16	137.5	55	82.5	42.5	10	-
HSK-A100-HCX20-137.5	80	43	50	20	137.5	55	82.5	42.5	10	HC20-..
HSK-A100-HCX25-165	100	57	63	25	165	65	100	51	10	-
HSK-A100-HCX32-168	100	63	70	32	168	65	103	55	10	HC32-..

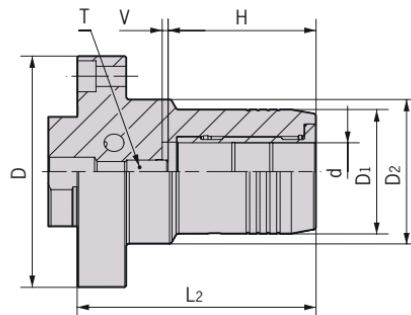
调整刀具轴向与径向跳动无限趋近与 0
预设动平衡 G2.5

可调刀柄 - 基础柄



型号	尺寸 (mm)	
	D	L1
HSK-A63-MOD80-60	80	60
HSK-A63-MOD100-65	100	65
HSK-A100-MOD80-55	80	55

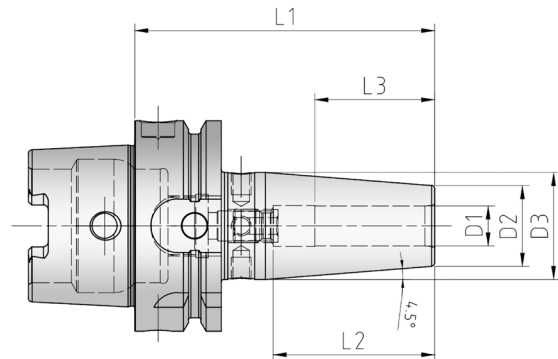
可调刀柄 - 液压头



型号	尺寸 (mm)							适配筒夹
	D	D1	D2	d	L2	H	V	
MOD80-HCX06-65	80	28	50	6	65	27.5	10	-
MOD80-HCX08-65	80	30	50	8	65	27.5	10	-
MOD80-HCX10-70	80	32	50	10	70	32.5	10	-
MOD80-HCX12-75	80	34	50	12	75	37.5	10	HC12-..
MOD80-HCX16-82.5	80	38	50	16	82.5	42.5	10	-
MOD80-HCX20-82.5	80	43	50	20	82.5	42.5	10	HC20-..
MOD100-HCX25-100	100	57	63	25	100	51	10	-
MOD100-HCX32-103	100	63	70	32	103	55	10	HC32-..

热胀刀柄

DIN69893

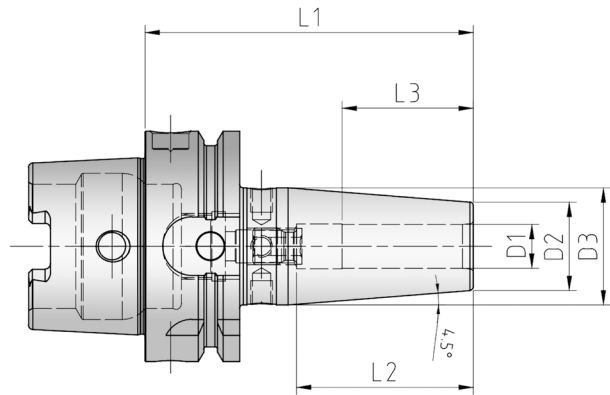


型号	主轴接口	尺寸 (mm)					
		D1	D2	D3	L1	L2 最大装夹深度	L3 最小装夹深度
HSK-A63-SF03-80	HSK-A63	3	10	16	80	-	9
HSK-A63-SF04-80	HSK-A63	4	10	16	80	-	12
HSK-A63-SF05-80	HSK-A63	5	10	16	80	-	15
HSK-A63-SF06-80	HSK-A63	6	21	27	80	36	26
HSK-A63-SF06-130	HSK-A63	6	21	27	130	36	26
HSK-A63-SF06-160	HSK-A63	6	21	27	160	36	26
HSK-A63-SF08-80	HSK-A63	8	21	27	80	36	26
HSK-A63-SF08-130	HSK-A63	8	21	27	130	36	26
HSK-A63-SF08-160	HSK-A63	8	21	27	160	36	26
HSK-A63-SF10-85	HSK-A63	10	24	32	85	42	32
HSK-A63-SF10-130	HSK-A63	10	24	32	130	42	32
HSK-A63-SF10-160	HSK-A63	10	24	32	160	42	32
HSK-A63-SF12-90	HSK-A63	12	24	32	90	47	37
HSK-A63-SF12-130	HSK-A63	12	24	32	130	47	37
HSK-A63-SF12-160	HSK-A63	12	24	32	160	47	37
HSK-A63-SF14-90	HSK-A63	14	27	34	90	47	37
HSK-A63-SF14-130	HSK-A63	14	27	34	130	47	37
HSK-A63-SF14-160	HSK-A63	14	27	34	160	47	37
HSK-A63-SF16-95	HSK-A63	16	27	34	95	50	40
HSK-A63-SF16-130	HSK-A63	16	27	34	130	50	40
HSK-A63-SF16-160	HSK-A63	16	27	34	160	50	40
HSK-A63-SF18-95	HSK-A63	18	33	42	95	50	40
HSK-A63-SF18-130	HSK-A63	18	33	42	130	50	40
HSK-A63-SF18-160	HSK-A63	18	33	42	160	50	40
HSK-A63-SF20-100	HSK-A63	20	33	42	100	52	42
HSK-A63-SF20-130	HSK-A63	20	33	42	130	52	42
HSK-A63-SF20-160	HSK-A63	20	33	42	160	52	42
HSK-A63-SF25-115	HSK-A63	25	44	53	115	58	48
HSK-A63-SF25-130	HSK-A63	25	44	53	130	58	48
HSK-A63-SF25-160	HSK-A63	25	44	53	160	58	48
HSK-A63-SF32-120	HSK-A63	32	44	53	120	58	48
HSK-A63-SF32-160	HSK-A63	32	44	53	160	58	48

刀柄标配轴向调整螺钉，含平衡螺钉孔
 预设动平衡 G2.5 20000rpm
 3 倍径处径向跳动 ≤ 0.003mm

热胀刀柄

DIN69893

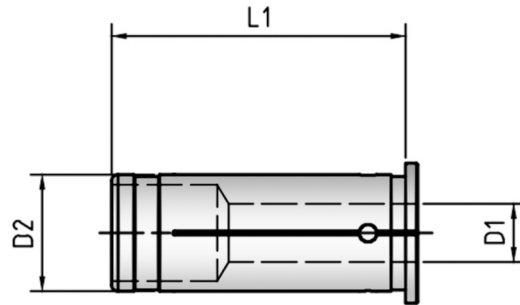


型号	主轴接口	尺寸 (mm)					
		D1	D2	D3	L1	L2 最大装夹深度	L3 最小装夹深度
HSK-A100-SF06-85	HSK-A100	6	21	27	85	36	26
HSK-A100-SF06-130	HSK-A100	6	21	27	130	36	26
HSK-A100-SF06-160	HSK-A100	6	21	27	160	36	26
HSK-A100-SF08-85	HSK-A100	8	21	27	85	36	26
HSK-A100-SF08-130	HSK-A100	8	21	27	130	36	26
HSK-A100-SF08-160	HSK-A100	8	21	27	160	36	26
HSK-A100-SF10-90	HSK-A100	10	24	32	90	42	32
HSK-A100-SF10-130	HSK-A100	10	24	32	130	42	32
HSK-A100-SF10-160	HSK-A100	10	24	32	160	42	32
HSK-A100-SF12-95	HSK-A100	12	24	32	95	47	37
HSK-A100-SF12-130	HSK-A100	12	24	32	130	47	37
HSK-A100-SF12-160	HSK-A100	12	24	32	160	47	37
HSK-A100-SF14-95	HSK-A100	14	27	34	95	47	37
HSK-A100-SF14-130	HSK-A100	14	27	34	130	47	37
HSK-A100-SF14-160	HSK-A100	14	27	34	160	47	37
HSK-A100-SF16-100	HSK-A100	16	27	34	100	50	40
HSK-A100-SF16-130	HSK-A100	16	27	34	130	50	40
HSK-A100-SF16-160	HSK-A100	16	27	34	160	50	40
HSK-A100-SF18-100	HSK-A100	18	33	42	100	50	40
HSK-A100-SF18-130	HSK-A100	18	33	42	130	50	40
HSK-A100-SF18-160	HSK-A100	18	33	42	160	50	40
HSK-A100-SF20-105	HSK-A100	20	33	42	105	52	42
HSK-A100-SF20-130	HSK-A100	20	33	42	130	52	42
HSK-A100-SF20-160	HSK-A100	20	33	42	160	52	42
HSK-A100-SF25-115	HSK-A100	25	44	53	115	58	48
HSK-A100-SF25-130	HSK-A100	25	44	53	130	58	48
HSK-A100-SF25-160	HSK-A100	25	44	53	160	58	48
HSK-A100-SF32-120	HSK-A100	32	44	53	120	58	48
HSK-A100-SF32-160	HSK-A100	32	44	53	160	58	48

刀柄标配轴向调整螺钉，含平衡螺钉孔
 预设动平衡 G2.5 20000rpm
 3 倍径处径向跳动 ≤ 0.003mm

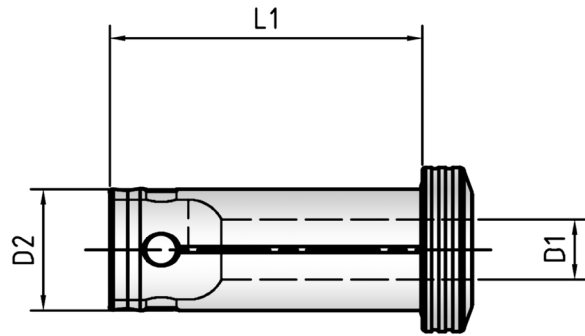
刀柄配件

液压筒夹 -- 端面出水型
夹持精度 0.003mm 以内



型号	尺寸 (mm)		
	D1	D2	L1
HC12-4A	4	12	45
HC12-6A	6		
HC12-8A	8		
HC20-4A	4	20	50.5
HC20-6A	6		
HC20-8A	8		
HC20-10A	10		
HC20-12A	12		
HC20-14A	14		
HC20-16A	16		
HC32-6A	6	32	60.5
HC32-8A	8		
HC32-10A	10		
HC32-12A	12		
HC32-14A	14		
HC32-16A	16		
HC32-18A	18		
HC32-20A	20		
HC32-25A	25		

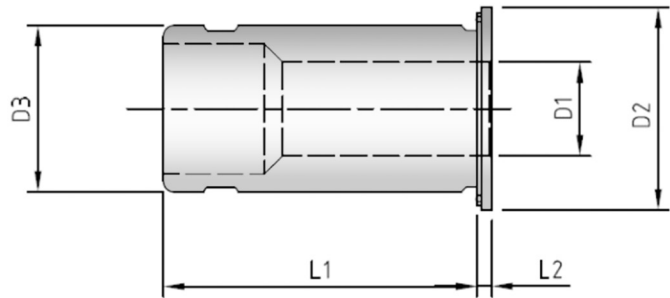
液压筒夹 -- 中心出水型
夹持精度 0.003mm 以内



型号	尺寸 (mm)		
	D1	D2	L1
HC12-4CA	4	12	45
HC12-6CA	6		
HC12-8CA	8		
HC20-4CA	4	20	51
HC20-6CA	6		
HC20-8CA	8		
HC20-10CA	10		
HC20-12CA	12		
HC20-14CA	14		
HC20-16CA	16		
HC32-6CA	6	32	64
HC32-8CA	8		
HC32-10CA	10		
HC32-12CA	12		
HC32-14CA	14		
HC32-16CA	16		
HC32-18CA	18		
HC32-20CA	20		
HC32-25CA	25		

强力变径套

夹持精度 0.01mm 以内



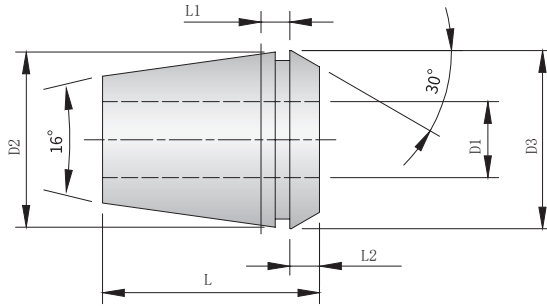
型号	库存	尺寸 (mm)				
		D1	D2	D3	L1	L2
C25-6	●	6	30	25	63	2.5
C25-8	●	8	30	25	63	2.5
C25-10	●	10	30	25	63	2.5
C25-12	●	12	30	25	63	2.5
C25-16	●	16	30	25	63	2.5
C25-20	●	20	30	25	63	2.5
C32-6	●	6	38	32	70	4
C32-8	●	8	38	32	70	4
C32-10	●	10	38	32	70	4
C32-12	●	12	38	32	70	4
C32-14	●	14	38	32	70	4
C32-16	●	16	38	32	70	4
C32-18	●	18	38	32	70	4
C32-20	●	20	38	32	70	4
C32-25	●	25	38	32	70	4

注：用于强力刀柄。

ER 筒夹介绍

高精度、高寿命 ER 筒夹特点：

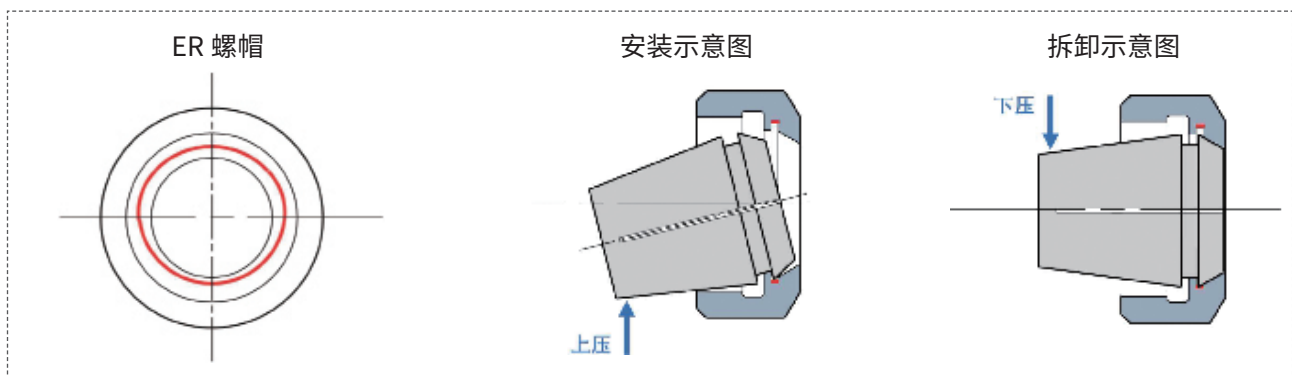
- 材质：JIS-SUJ2
- 硬度：46-50HRC
- 筒夹空刀槽采用磨削加工工艺，更适合于高速加工
- 内孔、外圆及端面精密研磨，可达 Ra0.4
- 表面“环保”特殊涂层处理，提高表面硬度、耐磨性、提高清洁度，精度更稳定，表面更光滑，防锈、防腐蚀效果更好，手感更舒适，外观更精致。



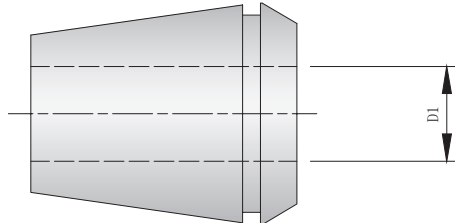
型号	尺寸 (mm)					
	D1	D2	D3	L	L1	L2
ER16	4-10	16	17	27.5	6.26	4
ER20	4-13	20	21	31.5	6.36	4.8
ER25	4-16	25	26	34	6.66	5
ER32	4-20	32	33	40	7.16	5.5
ER40	4-26	40	41	46	7.66	7

注：用于 ER 筒夹刀柄。

ER 弹性筒夹装卸方式



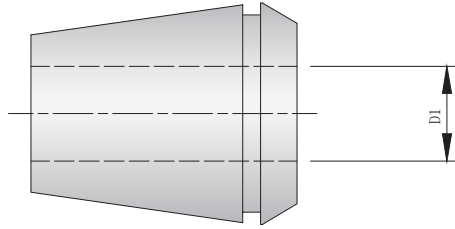
普通 ER 筒夹
夹持精度 0.008mm 以内



ER16		ER20		ER25		ER32		ER40	
型号	D1	型号	D1	型号	D1	型号	D1	型号	D1
ER16-4	4-3	ER20-4	4-3	ER25-4	4-3	ER32-4	4-3	ER40-4	4-3
ER16-6	6-5	ER20-6	6-5	ER25-6	6-5	ER32-6	6-5	ER40-6	6-5
ER16-8	8-7	ER20-8	8-7	ER25-8	8-7	ER32-8	8-7	ER40-8	8-7
ER16-10	10-9	ER20-10	10-9	ER25-10	10-9	ER32-10	10-9	ER40-10	10-9
		ER20-12	12-11	ER25-12	12-11	ER32-12	12-11	ER40-12	12-11
				ER25-14	14-13	ER32-14	14-13	ER40-14	14-13
				ER25-16	16-15	ER32-16	16-15	ER40-16	16-15
						ER32-18	18-17	ER40-18	18-17
						ER32-20	20-19	ER40-20	20-19
								ER40-25	25-24

注：用于 ER 筒夹刀柄。

高精度 ER 筒夹
夹持精度 0.005mm 以内

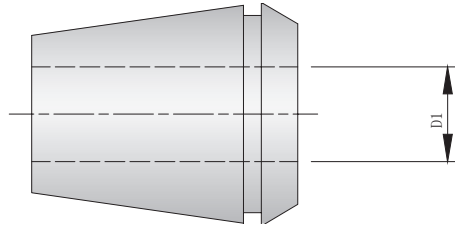


ER16		ER20		ER25		ER32	
型号	D1	型号	D1	型号	D1	型号	D1
ER16-4A	4-3	ER20-4A	4-3	ER25-4A	4-3	ER32-4A	4-3
ER16-6A	6-5	ER20-6A	6-5	ER25-6A	6-5	ER32-6A	6-5
ER16-8A	8-7	ER20-8A	8-7	ER25-8A	8-7	ER32-8A	8-7
ER16-10A	10-9	ER20-10A	10-9	ER25-10A	10-9	ER32-10A	10-9
		ER20-12A	12-11	ER25-12A	12-11	ER32-12A	12-11
				ER25-14A	14-13	ER32-14A	14-13
				ER25-16A	16-15	ER32-16A	16-15
						ER32-18A	18-17
						ER32-20A	20-19

注：用于 ER 筒夹刀柄。





ER 止水筒夹

夹持精度 0.008mm 以内



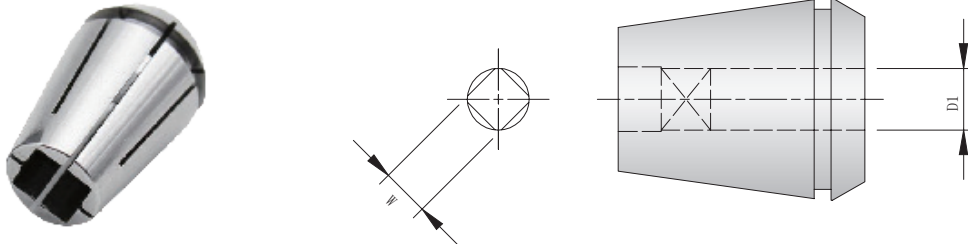
ER16		ER20		ER25		ER32	
型号	D1	型号	D1	型号	D1	型号	D1
ER16-4C	4-3.9	ER20-4C	4-3.9	ER25-4C	4-3.9	ER32-4C	4-3.9
ER16-6C	6-5.5	ER20-6C	6-5.5	ER25-6C	6-5.5	ER32-6C	6-5.5
ER16-8C	8-7.5	ER20-8C	8-7.5	ER25-8C	8-7.5	ER32-8C	8-7.5
ER16-10C	10-9.5	ER20-10C	10-9.5	ER25-10C	10-9.5	ER32-10C	10-9.5
		ER20-12C	12-11.5	ER25-12C	12-11.5	ER32-12C	12-11.5
				ER25-14C	14-13.5	ER32-14C	14-13.5
				ER25-16C	16-15.5	ER32-16C	16-15.5
						ER32-18C	18-17.5
						ER32-20C	20-19.5

注：用于 ER 筒夹刀柄。

图示	产品型号	ER 筒夹套装系列	支 / 套 PCS/SET	筒夹精度 Accuracy (3D)
普通筒夹 	ER16-8PCS	3,4,5,6,7,8,9,10	8PCS/SET	≤ 0.008mm
	ER20-11PCS	3,4,5,6,7,8,9,10,11,12,13	11PCS/SET	
	ER25-14PCS	3,4,5,6,7,8,9,10,11,12,13,14,15,16	14PCS/SET	
	ER32-18PCS	3,4,5,6,7,8,9,10,11,12,13,14,15,16,17,18,19,20	18PCS/SET	
	ER40-8PCS	4,6,8,10,12,16,20,25	8PCS/SET	
高精度筒夹 	ER16A-8PCS	3,4,5,6,7,8,9,10	8PCS/SET	≤ 0.005mm
	ER20A-11PCS	3,4,5,6,7,8,9,10,11,12,13	11PCS/SET	
	ER25A-14PCS	3,4,5,6,7,8,9,10,11,12,13,14,15,16	14PCS/SET	
	ER32A-18PCS	3,4,5,6,7,8,9,10,11,12,13,14,15,16,17,18,19,20	18PCS/SET	
普通止水筒夹 	ER16C-8PCS	3,4,5,6,7,8,9,10	8PCS/SET	≤ 0.008mm
	ER20C-11PCS	3,4,5,6,7,8,9,10,11,12,13	11PCS/SET	
	ER25C-14PCS	3,4,5,6,7,8,9,10,11,12,13,14,15,16	14PCS/SET	
	ER32C-18PCS	3,4,5,6,7,8,9,10,11,12,13,14,15,16,17,18,19,20	18PCS/SET	
高精度止水筒夹 	ER16CA-8PCS	3,4,5,6,7,8,9,10	8PCS/SET	≤ 0.005mm
	ER20CA-11PCS	3,4,5,6,7,8,9,10,11,12,13	11PCS/SET	
	ER25CA-14PCS	3,4,5,6,7,8,9,10,11,12,13,14,15,16	14PCS/SET	
	ER32CA-18PCS	3,4,5,6,7,8,9,10,11,12,13,14,15,16,17,18,19,20	18PCS/SET	

ER 攻丝筒夹

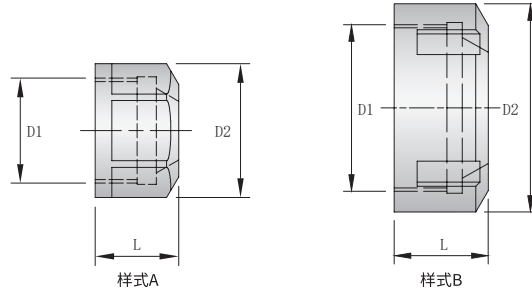
8 槽 夹持精度 0.02mm 以内



型号			D1	W	螺纹规格	通用标准
ER20	ER25	ER32				
ER20G-4.5W34	ER25G-4.5W34		4.5	3.4	M4 M6	DIN371 DIN376
ER20G-6W49	ER25G-6W49	ER32G-6W49	6	4.9	M5/M6 M8	DIN371 DIN376
ER20G-7W55	ER25G-7W55	ER32G-7W55	7	5.5	M10	DIN376
ER20G-8W62	ER25G-8W62	ER32G-8W62	8	6.2	M8	DIN371
ER20G-9W70	ER25G-9W70	ER32G-9W70	9	7	M12	DIN376
ER20G-10W80	ER25G-10W80	ER32G-10W80	10	8	M10	DIN371
	ER25G-11W90	ER32G-11W90	11	9	M14	DIN376
	ER25G-12W90	ER32G-12W90	12	9	M16	DIN376
		ER32G-14W110	14	11	M18	DIN376
		ER32G-16W120	16	12	M20	DIN376
		ER32G-18W145	18	14.5	M22 M24	DIN376 DIN376

注：用于 ER 筒夹刀柄。

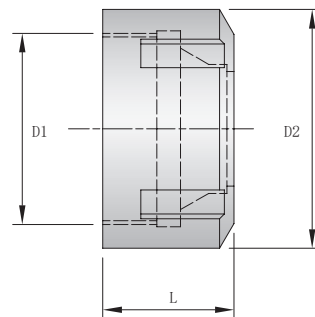
普通 ER 螺母



型号	尺寸 (mm)			样式	适用筒夹
	D1	D2	L		
ER16-A	M22X1.5	28	17.5	A	ER16
ER20-A	M25X1.5	34	19	A	ER20
ER25-UM	M32X1.5	42	20	B	ER25
ER32-UM	M40X1.5	50	23	B	ER32
ER40-UM	M50X1.5	63	26	B	ER40

注：用于 ER 筒夹刀柄，ER 筒夹刀柄含一个螺帽。

内冷 ER 螺母

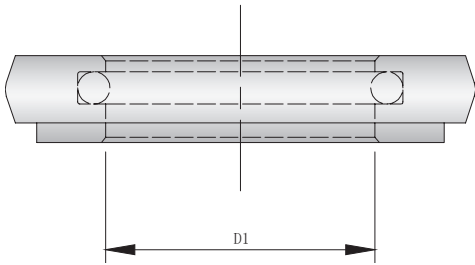


型号	尺寸 (mm)			适用筒夹
	D1	D2	L	
ER20-AC	M25X1.5	34	24	ER20
ER25-UMC	M32X1.5	42	25	ER25
ER32-UMC	M40X1.5	50	28	ER32
ER40-UMC	M50X1.5	63	30.5	ER40

注：配合止水垫片，用于内冷丝锥。

刀柄配件

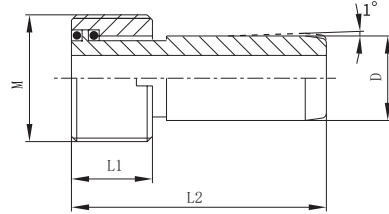
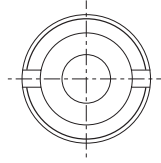
止水垫片



夹持范围	型号			
	ER20	ER25	ER32	ER40
4.0-3.5	RC20-4	RC25-4	RC32-4	
5.0-4.5	RC20-5	RC25-5	RC32-5	
6.0-5.5	RC20-6	RC25-6	RC32-6	RC40-6
6.5-6.0	RC20-6.5	RC25-6.5	RC32-6.5	
7.0-6.5	RC20-7	RC25-7	RC32-7	
8.0-7.5	RC20-8	RC25-8	RC32-8	RC40-8
9.0-8.5	RC20-9	RC25-9	RC32-9	
10.0-9.5	RC20-10	RC25-10	RC32-10	RC40-10
12.0-11.5		RC25-12	EC32-12	RC40-12
14.0-13.5		RC25-14	RC32-14	RC40-14
16.0-15.5			RC32-16	RC40-16
18.0-17.5			RC32-18	RC40-18
20.0-19.5			RC32-20	RC40-20
22.0-21.5				RC40-22
24.0-23.5				RC40-24
25.0-24.5				RC40-25

注：用于止水 ER 螺帽。

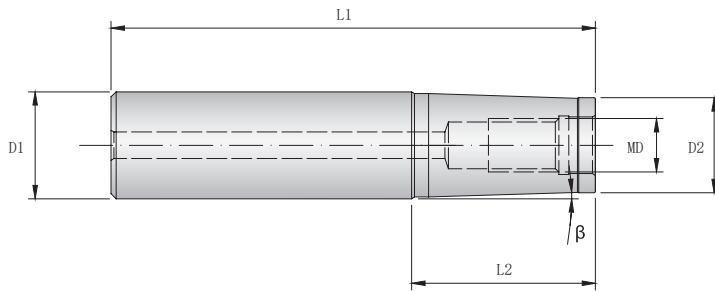
HSK 冷却管



型号	库存	主轴接口	尺寸 (mm)			
			M	D	L1	L2
CT-HSK63	●	HSK-63	M18×1	12	11.5	36.6
CT-HSK100	●	HSK-100	M24×1.5	16	15.5	44.2

●: 常备库存 ○: 按订单生产

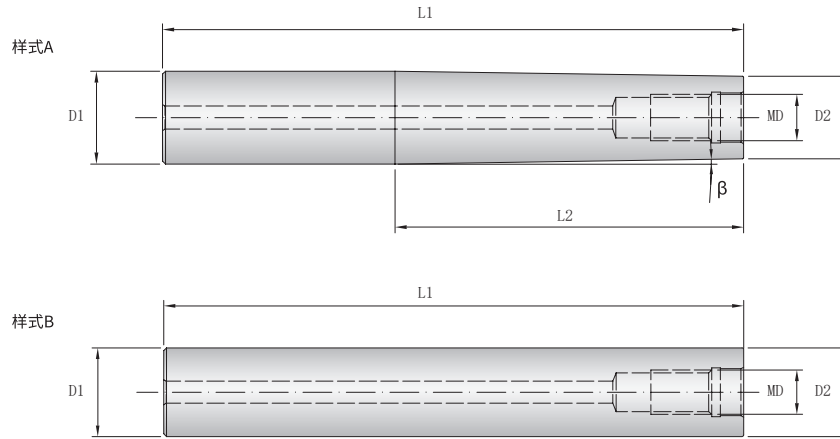
钢制螺纹延长杆



型号	柄部接口	尺寸 (mm)					
		D1	D2	MD	L1	L2	β
C16S-M08-80-T	C16	16	14.5	M08	80	20	3° 12'
C16S-M08-100-T	C16	16	14.5	M08	100	40	1° 4'
C20S-M10-100-T	C20	20	18	M10	100	40	1° 53'
C20S-M10-120-T	C20	20	18	M10	120	50	1°
C25S-M12-110-T	C25	25	22.5	M12	110	30	2° 36'
C25S-M12-130-T	C25	25	22.5	M12	130	50	1° 18'
C32S-M16-125-T	C32	32	28.5	M16	125	35	3° 15'
C32S-M16-145-T	C32	32	28.5	M16	145	55	1° 48'

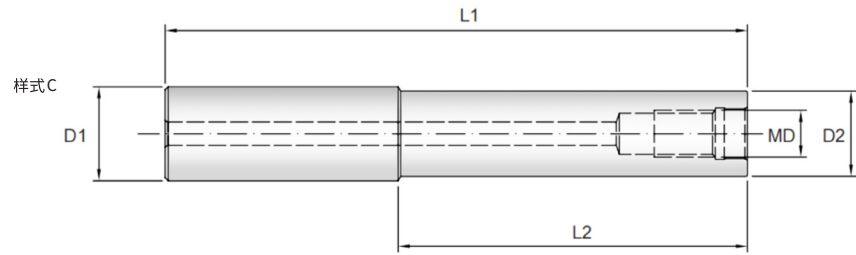
注：推荐使用于立式机床；为获得较好的使用效果，请结合机床刚性、刀具悬伸、加工参数等综合评估、选型

硬质合金螺纹延长杆



型号	柄部接口	尺寸 (mm)						样式
		D1	D2	MD	L1	L2	β	
C20C-M08-100-T	C20	20	14.5	M08	100	40	3° 30'	A
C20C-M08-150-T	C20	20	14.5	M08	150	77	1° 45'	A
C16C-M08-200-T	C16	16	15.5	M08	200	150	43'	A
C20C-M10-100-T	C20	20	18.5	M10	100	40	43'	A
C25C-M10-150-T	C25	25	18.5	M10	150	70	1° 43'	A
C20C-M10-150-T	C20	20	18.5	M10	150	90	19'	A
C20C-M10-200-T	C20	20	18.5	M10	200	140	12'	A
C32C-M12-200-T	C32	32	23.5	M12	200	120	1° 45'	A
C32C-M16-200-T	C25	32	29	M16	200	120	30'	A
C32C-M16-250-T	C32	32	29	M16	250	170	28'	A
C32C-M16-300-T	C32	32	29	M16	300	200	28'	A
C16C-M08-100	C16	16	16	M08	100			B
C16C-M08-150	C16	16	16	M08	150			B
C16C-M08-200	C16	16	16	M08	200			B
C20C-M10-100	C20	20	20	M10	100			B
C20C-M10-150	C20	20	20	M10	150			B
C20C-M10-200	C20	20	20	M10	200			B
C20C-M10-250	C20	20	20	M10	250			B
C25C-M12-100	C25	25	25	M12	100			B
C25C-M12-150	C25	25	25	M12	150			B
C25C-M12-200	C25	25	25	M12	200			B
C25C-M12-250	C25	25	25	M12	250			B
C25C-M12-300	C25	25	25	M12	300			B
C32C-M16-150	C32	32	32	M16	150			B
C32C-M16-200	C32	32	32	M16	200			B
C32C-M16-250	C32	32	32	M16	250			B
C32C-M16-300	C32	32	32	M16	300			B

刀柄配件



型号	柄部接口	尺寸 (mm)						样式
		D1	D2	MD	L1	L2	β	
C16C-M08-100-R	C16	16	15.5	M08	100	40		C
C16C-M08-150-R	C16	16	15.5	M08	150	90		C
C16C-M08-200-R	C16	16	15.5	M08	200	120		C
C20C-M10-100-R	C20	20	19.5	M10	100	40		C
C20C-M10-150-R	C20	20	19.5	M10	150	90		C
C20C-M10-200-R	C20	20	19.5	M10	200	140		C
C20C-M10-250-R	C20	20	19.5	M10	250	180		C
C25C-M12-100-R	C25	25	24	M12	100	25		C
C25C-M12-150-R	C25	25	24	M12	150	70		C
C25C-M12-200-R	C25	25	24	M12	200	120		C
C25C-M12-250-R	C25	25	24	M12	250	180		C
C25C-M12-300-R	C25	25	24	M12	300	220		C
C32C-M16-100-R	C32	32	29	M16	100	30		C
C32C-M16-150-R	C32	32	29	M16	150	70		C
C32C-M16-200-R	C32	32	29	M16	200	120		C
C32C-M16-250-R	C32	32	29	M16	250	170		C
C32C-M16-300-R	C32	32	29	M16	300	220		C

注：推荐使用于立式机床；为获得较好的使用效果，请结合机床刚性、刀具悬伸、加工参数等综合评估、选型